

CORDUROY

As recorded by Pearl Jam

(From the 1994 Album VITALOGY)

A Intro

$\text{♩} = 127$
E5

Asus2

1

Gtr I
let ring

T				
A				
B	7	7	9	7 9

	7	7	9	7 9 7

	0	0	9	0 9

	0	0	9	0 9

5

E5

Asus2

let ring

T	•			
A	•			
B	•	7	7	9 7 9

	7	7	9	7 9 7

	0	0	9	0 9

	0	0	9	0 9

9

E5

Asus2

Gtr I
let ring

T				
A				
B	7	7	9	7 9

	7	7	9	7 9 7

	0	0	9	0 9 0

Gtr III

T				
A				
B				

	0	0	0	0 0 0 0

B Verse 1

Faster ♩ = 132

F5

E5

G5

Cmaj7

12

let ring Gtr II *f*

Gtrs III, IV *ff*

sl.

15

F E G5 F E5 G5

sl. *sl.*

19

F E G5 F E G5 Csus2

T 1 1 1 x 0 3 (3) 3 3 1 1 1 x 0 3 (3) 3 3 3 3 3 3

A 2 2 2 x 1 0 0 0 2 2 2 x 1 0 0 0 0 0 0 0 0

B 3 3 3 x 2 3 (3) 3 3 3 3 3 x 2 3 (3) 3 3 3 3 3 3

T 10 10 10 9 0 (0) 3 10 10 10 9 0 (0) 0 3 3 3 3

A 10 10 10 9 0 (0) 0 10 10 10 9 0 (0) 0 x x x x

B 8 8 8 7 3 (3) 3 (3) 8 8 8 7 3 (3) 3 3 3 3 3 3

sl.

C Chorus 1

G/B A5 G5 Csus2 G/B A5 G5 Csus2

23

Gtr II let ring---1 let ring---1

T 3 3 3 3 (3) 3 3 3 3 3 3 3 3 3 3 3 3 3 3 3 3

A x x x 2 0 (0) 0 0 x x x 2 0 (0) 0 x x x 0

B 2 2 2 0 x (3) 3 3 3 3 2 0 x (3) 3 3 3 3 3 3 3 3

Gtr III let ring---1

T 3

A x x x 2 0 0 0 0 0 0 0 2 0 0 0 0 0 0 0 0

B 2 2 2 0 x 3 3 3 3 2 0 x 3 3 3 3 3 3 3 3 3 3

Gtr IV let ring-----1

T 3 3 3 3 (3) 0 3 3 3 3 3 3 3 3 3 3 3 3 3 3 3

A x x x 2 0 (0) 0 0 x x x 2 0 (0) 0 0 0 0 0 0 0 0

B 2 2 2 0 x (3) 3 3 3 3 2 0 x (3) 3 3 3 3 3 3 3 3 3 3

D Bridge

E5

Asus2

Cmaj7

31

Gtr I

let ring

T

A

B

 mf

T

A

B

$$f$$

T

A

B

The image displays a musical score for guitar, consisting of a melody line and a fretboard diagram. The melody line is written in treble clef, with a key signature of one sharp (F#) and a 4/4 time signature. It includes various chords and a 'let ring' instruction. The fretboard diagram shows the fret positions for the melody line, with a 'Gtr II' instruction indicating a second guitar part.

Chords and Fingering:

- E5:** 7 (index), 9 (middle), 7 (ring), 7 (pinky), 7 (index), 7 (middle), 7 (ring), 7 (pinky)
- Asus2:** (7) 7 (index), 9 (middle), 9 (ring), 9 (pinky), 7 (index), 7 (middle), 9 (ring)
- Cmaj7:** 0 (index), 9 (middle), 0 (ring), 0 (pinky), 0 (index), 8 (middle), (0) 8 (ring), 8 (pinky), 8 (index), 8 (middle), 8 (ring), 8 (pinky)

Let Ring: A dashed line indicates a 'let ring' instruction, spanning the duration of the E5, Asus2, and Cmaj7 chords.

Gtr II: A second guitar part, indicated by the 'Gtr II' label, is shown in the bottom system of the score.

E Verse 2

39

F5 E5 G5 F E G5

Gtr II

let ring

T

A

B

Gtrs III, *ff*

sl.

sl.

43

F E G5 F E G5

let ring

T 1 1 1 x 0 3 (3) 3 1 1 1 x 0 3 (3) 3
A 2 2 2 x x 0 3 2 2 2 x x 0 3 (3) 3
B 3 3 3 x 2 3 (3) 3 3 3 3 x 2 3 (3) 3

T 10 10 10 9 0 (0) 3
A 10 10 10 9 0 (0) 3
B 8 8 8 7 x (3) 3

sl. *sl.*

F Chorus 2

47

F E G5 Csus2 G/B A5 G5 Csus2

Gtr II *let ring*----

T 1 1 1 x 0 3 (3) 3 3 3 3 3 3 3 3 (3) 3 3 3 3 3 3 3 3
A 2 2 2 x 2 3 (3) 3 3 3 3 3 3 3 3 (3) 3 3 3 3 3 3 3 3
B 3 3 3 x 2 3 (3) 3 3 3 3 3 3 3 3 (3) 3 3 3 3 3 3 3 3

Gtr III

T 10 10 10 9 0 (0) 3 3 3 3 3 3 3 3 3 3 3 3 3 3 3 3 3
A 10 10 10 9 0 (0) 3 3 3 3 3 3 3 3 3 3 3 3 3 3 3 3 3
B 8 8 8 7 x (3) 3 3 3 3 3 3 3 3 3 3 3 3 3 3 3 3 3

Gtr IV *let ring*-----

T 10 10 10 9 0 (0) 3 3 3 3 3 3 3 3 (3) 0 3 3 3 3 3 3 3
A 10 10 10 9 0 (0) 3 3 3 3 3 3 3 3 (3) 0 3 3 3 3 3 3 3
B 8 8 8 7 x (3) 3 3 3 3 3 3 3 3 (3) 0 3 3 3 3 3 3 3

51

G/B A5 G5 Csus2 G/B A5 G5 Csus2

let ring-----1

let ring-----1

let ring-----1

55

G/B A5 G5 Csus2 G/B A5 G5 Csus2

let ring

let ring

let ring

let ring

G Interlude

G/B A5 G5 G/B Csus2

63

let ring-----1

67

Csus2 G/B

Generated using the Power Tab Editor by Brad Larsen. <http://powertab.guitarnetwork.org>

71

Csus2

G/B

T

A

B

T

A

B

T

A

B

75

Csus2

G/B

T

A

B

T

A

B

T

A

B

H Chorus 3

Csus2

G/B

A5

G5

Csus2

[illegible]

83

G/B A5 G5 Csus2 G/B A5 G5 Csus2

let ring---|

P.M.

let ring-----|

let ring---|

G/B A5 G5 Csus2 G/B A5 G5 Csus2

87

let ring----

let ring----

P.M. P.M.

let ring----

	T	A	B
1	3	0	2
2	3	x	2
3	3	x	2
4	3	x	2
5	3	0	0
6	(3)	(0)	(x)
7	3	3	3
8	3	3	3
9	3	3	3
10	3	3	3
11	3	3	2
12	3	3	0
13	(3)	(0)	(x)
14	3	3	3
15	3	3	3
16	3	3	3
17	3	3	3
18	3	3	3
19	3	3	3
20	3	3	3
21	3	3	3
22	3	3	3
23	3	3	3
24	3	3	3
25	3	3	3
26	3	3	3
27	3	3	3
28	3	3	3
29	3	3	3
30	3	3	3
31	3	3	3
32	3	3	3
33	3	3	3
34	3	3	3
35	3	3	3
36	3	3	3
37	3	3	3
38	3	3	3
39	3	3	3
40	3	3	3
41	3	3	3
42	3	3	3
43	3	3	3
44	3	3	3
45	3	3	3
46	3	3	3
47	3	3	3
48	3	3	3
49	3	3	3
50	3	3	3
51	3	3	3
52	3	3	3
53	3	3	3
54	3	3	3
55	3	3	3
56	3	3	3
57	3	3	3
58	3	3	3
59	3	3	3
60	3	3	3
61	3	3	3
62	3	3	3
63	3	3	3
64	3	3	3
65	3	3	3
66	3	3	3
67	3	3	3
68	3	3	3
69	3	3	3
70	3	3	3
71	3	3	3
72	3	3	3
73	3	3	3
74	3	3	3
75	3	3	3
76	3	3	3
77	3	3	3
78	3	3	3
79	3	3	3
80	3	3	3
81	3	3	3
82	3	3	3
83	3	3	3
84	3	3	3
85	3	3	3
86	3	3	3
87	3	3	3
88	3	3	3
89	3	3	3
90	3	3	3
91	3	3	3
92	3	3	3
93	3	3	3
94	3	3	3
95	3	3	3
96	3	3	3
97	3	3	3
98	3	3	3
99	3	3	3
100	3	3	3

I Verse 3

G/B A5 F E G5

91

T 3 3 3 3 1 1 1 x 0 3 (3) 3
A 0 0 0 0 2 2 2 x 1 (3) (3) (3)
B x x x x 0 3 3 x 2 3 (3) (3) (3)

T 3 3 3 3 10 10 10 0 0 (0) 3
A 0 0 0 0 8 8 8 7 0 (0) 0
B 2 2 2 2 0 8 8 8 3 (3) (3) (3) *sl.*

w/slide * continuation of slide from 2nd fret to 10th fret

T 3 3 3 2 (9) 10 10 10 (10) 9 (9) 12 (12) (12)
A 0 0 0 2 (9) 10 10 10 (10) 9 (9) 12 (12) (12)
B 2 2 2 2 (9) 10 10 10 (10) 9 (9) 12 (12) (12) *sl.*

sl. *sl.* *sl.* *sl.* *sl.*

94

F E G5 F E G5

T 1 1 1 x 0 3 (3) 3 1 1 1 x 0 3 (3) 3
A 2 2 2 x 1 0 0 2 2 2 x 1 0 0 2 2
B 3 3 3 x 2 3 3 3 3 3 x 2 3 3 3 3

T 10 10 10 9 0 3 10 10 10 9 0 3
A 10 10 10 9 0 0 (9) 10 10 10 9 0 0 (9)
B 8 8 8 7 3 (3) 8 8 8 7 3 (3) (3) sl. (3) sl.

T 10 10 10 (10) 9 (9) 12 (12) (12) 10 10 10 (10) 9 (9) 12 (12) (12)
A 10 10 10 (10) 9 (9) 12 (12) (12) 10 10 10 (10) 9 (9) 12 (12) (12)
B 10 10 10 (10) 9 (9) 12 (12) (12) 10 10 10 (10) 9 (9) 12 (12) (12)

sl. sl. sl. sl. sl.

J Breakdown

F E G5 F Em

98

Gtr I

T A B

1 1 1 x 0 3 (3) 3 1 1 1 x 0 (0)

2 2 2 x 1 0 (0) 0 2 2 2 x 0 (0)

3 3 3 x 2 0 (0) 0 3 3 3 x 2 (2)

3 3 (3) 3

10 10 10 9 0 (0) 0 10 10 10 9 (9)

10 10 10 9 0 (0) 0 10 10 10 9 (9)

8 8 8 7 x (x) x 8 8 8 7 (7)

(3) sl. sl.

10 10 10 (10) 9 (9) 12 (12) (12) 10 10 10 (10) 9 (9)

10 10 10 (10) 9 (9) 12 (12) (12) 10 10 10 (10) 9 (9)

sl. sl. sl. sl. sl. sl.

102

Gtr I

3

p mp

T A B

0 0 0 0 0 0 0 0 0 0 0 0 (0) 0 0 0 0 0 0 0

109

E5 Asus2 Cmaj7

Gtr I *mf*
let ring

T
A
B

Gtr IV *mp*

T
A
B

113

E5 Asus2 Cmaj7

let ring

Gtr II

T
A
B

T
A
B

K Outro

Em

Asus2

Cmaj7

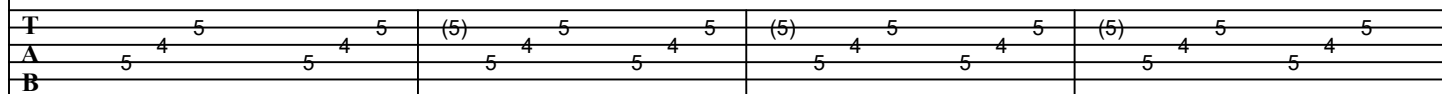
117



Gtr II

Gtr III *mp*

Gtr IV

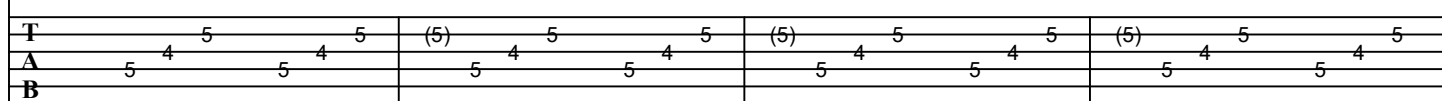
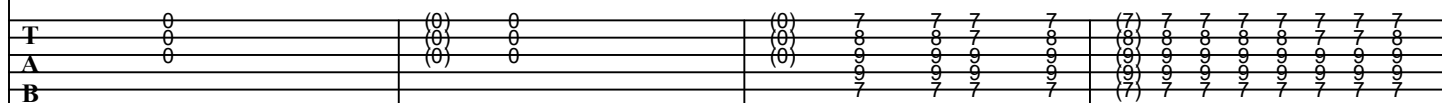
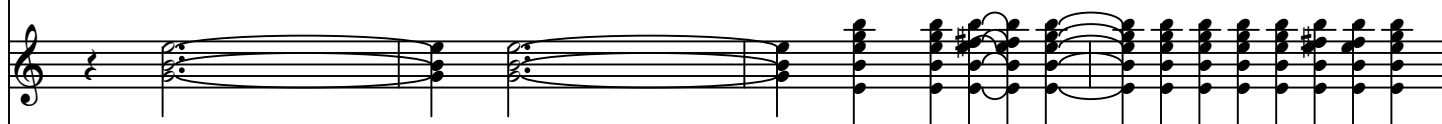
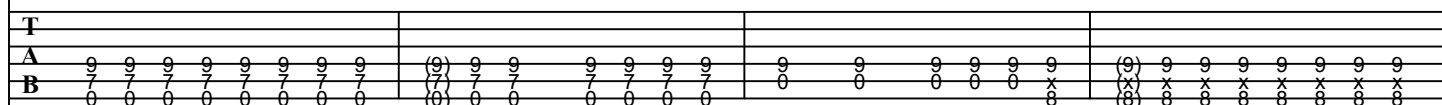


Em

Asus2

Cmaj7

121



125

Em Asus2 Cmaj7

T
A
B

mf

129

Em Asus2 Cmaj7

T
A
B

[illegible]

Fade out

137

Full out

Em

Asus2

Cmaj7

T

A

B

T

A

B

T

A

B

[illegible]